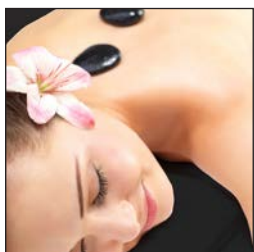
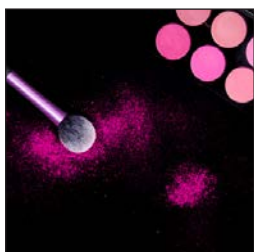
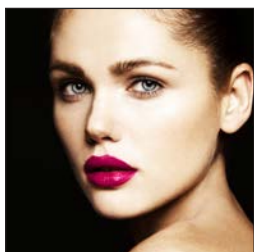


ENTRY REQUIREMENTS

SIB70110 Graduate Certificate in Intense Pulsed Light and Laser Hair Reduction



Academic suitability

A student must be academically suited to undertake their course of study.

A student is academically suited if:

- (a) the student provides a copy of a Senior Secondary Certificate of Education that has been awarded to the student by an agency or authority of a State or Territory for the student's completion of year 12; or
- (b) both:
 - (i) The student is assessed as displaying competence at or above Exit Level 3 in the Australian Core Skills Framework in both reading and numeracy using an approved LLN assessment tool. Note The Australian Academy of beauty Therapy uses the Core Skills profile for Adults (CSPA) tool from ACER; and
 - (ii) The Academy reasonably believes the student displays that competence; or
- (c) both:
 - (i) The Academy obtains a copy of a certificate (however described) that a qualification at level 4 or above in the Australian Qualifications Framework has been awarded to the student; and
 - (ii) The course for the qualification was delivered in English.
- (d) If a student is required to be assessed using the LLN tool, you will be emailed the procedure to access this tool prior to enrolment confirmation. You will also be advised of a support person should you need clarification on any matter. Results of the testing will be emailed to you as soon as practicable after the assessment
- (e) Your results will be downloaded by our staff and you will be informed of the results as soon as practicable after the assessment. The Secretary of the Department of education may obtain these results upon request. These results are retained for at least 5 years in our Wisenet management system. The test has two parts:
 - **Reading tasks** are based on a broad range of texts designed or chosen for their authenticity and relevance to the lives of adult students.

Reading questions are presented to students in a simulated online reading environment.

A split screen is used to allow a dedicated area for each text, with questions located in a separate screen opposite.
 - **Numeracy**

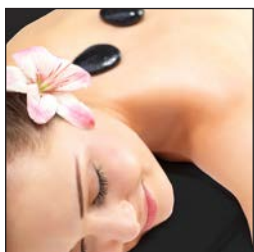
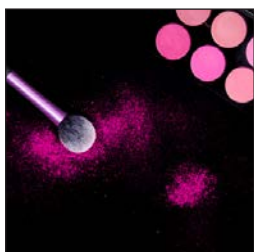
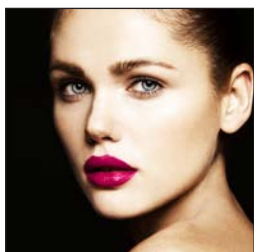
The CSPA numeracy assessment provide diagnostic feedback on the learner's performance in the focus areas of:

 - Problem solving
 - Number and algebra
 - Measurement and geometry
 - Statistics and probability

The test must be conducted with honesty and integrity.

ENTRY REQUIREMENTS

SIB70110 Graduate Certificate in Intense Pulsed Light and Laser Hair Reduction



Other requirements

- Diploma of Beauty Therapy or a relevant qualification at diploma level or above in medical health, including the study of human biology, anatomy and physiology, and significant and relevant vocational experience as a beauty therapist with a primary focus on providing facial services, skin services and hair reduction services.
or
- Evidence of significant and relevant vocational experience relating to the application of human biology, anatomy and physiology knowledge in their respective field.
- All prospective students are to have a one on one interview with the CEO of The Academy or another senior manager. This is to ensure prospective students display a real interest in the course, and understand the commitments of the course.
- A high standard of grooming and a caring nurturing personality are other requirements to being a successful laser therapist.
- HLTAID003 Provide first aid must be completed before starting practical part of course.

Students to supply

- Notebook, stationery for class
- Laptop, or ipad recommended for class but not essential
- Computer and internet required at home for research and theory assessments
- Unique email address
- Uniform (cost \$135)
- Closed in flat rubber soled shoes

